



A single bass line staff containing a sequence of eighth notes: G2, A2, B2, C3, D3, E3, F3, G3, A3, B3, C4, D4, E4, F4, G4, A4, B4, C5, followed by a whole rest.

2-4

A bass line staff with a treble clef and a 2-4 fingering label. It contains a sequence of eighth notes: G4, A4, B4, C5, D5, E5, F5, G5, A5, B5, C6, D6, E6, F6, G6, A6, B6, C7, followed by a whole rest.

A bass line staff with a treble clef containing a sequence of eighth notes: G4, A4, B4, C5, D5, E5, F5, G5, A5, B5, C6, D6, E6, F6, G6, A6, B6, C7, followed by a whole rest.

A single bass line staff containing a sequence of eighth notes: G2, A2, B2, C3, D3, E3, F3, G3, A3, B3, C4, D4, E4, F4, G4, A4, B4, C5, followed by a whole rest.

3-1

A bass line staff with a treble clef and a 3-1 fingering label. It contains a sequence of eighth notes: G4, A4, B4, C5, D5, E5, F5, G5, A5, B5, C6, D6, E6, F6, G6, A6, B6, C7, followed by a whole rest.

A bass line staff with a treble clef containing a sequence of eighth notes: G4, A4, B4, C5, D5, E5, F5, G5, A5, B5, C6, D6, E6, F6, G6, A6, B6, C7, followed by a whole rest.

A single bass line staff containing a sequence of eighth notes: G2, A2, B2, C3, D3, E3, F3, G3, A3, B3, C4, D4, E4, F4, G4, A4, B4, C5, followed by a whole rest.

A single bass line staff containing a sequence of eighth notes: G2, A2, B2, C3, D3, E3, F3, G3, A3, B3, C4, D4, E4, F4, G4, A4, B4, C5, followed by a whole rest.

3-2

A bass line staff with a treble clef and a 3-2 fingering label. It contains a sequence of eighth notes: G4, A4, B4, C5, D5, E5, F5, G5, A5, B5, C6, D6, E6, F6, G6, A6, B6, C7, followed by a whole rest.

A bass line staff with a treble clef containing a sequence of eighth notes: G4, A4, B4, C5, D5, E5, F5, G5, A5, B5, C6, D6, E6, F6, G6, A6, B6, C7, followed by a whole rest.

A single bass line staff containing a sequence of eighth notes: G2, A2, B2, C3, D3, E3, F3, G3, A3, B3, C4, D4, E4, F4, G4, A4, B4, C5, followed by a whole rest.

A single bass clef staff containing a melodic line of eighth and quarter notes, ending with a double bar line.

3-3

Two bass clef staves. The top staff contains a rhythmic pattern of eighth notes, and the bottom staff contains a similar pattern, possibly representing a different voice or instrument part.

A single bass clef staff containing a melodic line of eighth and quarter notes.

A single bass clef staff containing a melodic line of eighth and quarter notes, ending with a double bar line.

3-4

Two bass clef staves. The top staff contains a rhythmic pattern of eighth notes, and the bottom staff contains a similar pattern.

A single bass clef staff containing a melodic line of eighth and quarter notes.

A single bass clef staff containing a melodic line of eighth and quarter notes, ending with a double bar line.

4-1

Two bass clef staves. The top staff contains a rhythmic pattern of eighth notes, and the bottom staff contains a similar pattern.





149 5-2



153



157



161 5-3



165



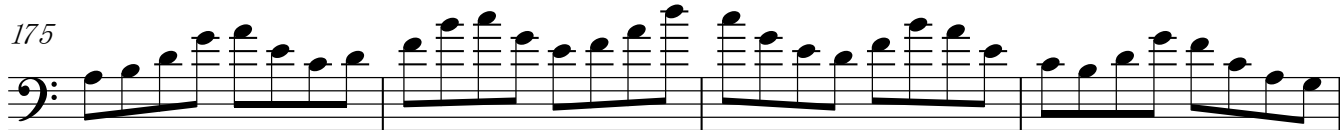
168



171 5-4

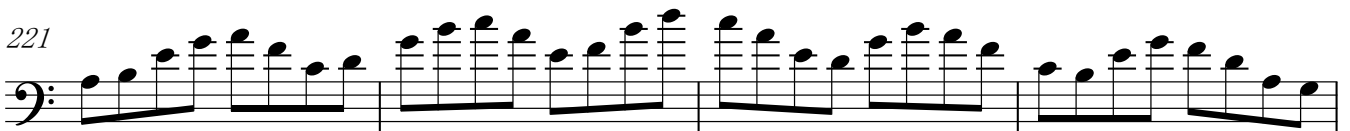
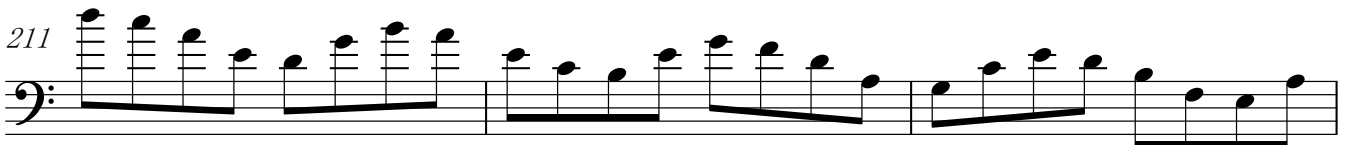
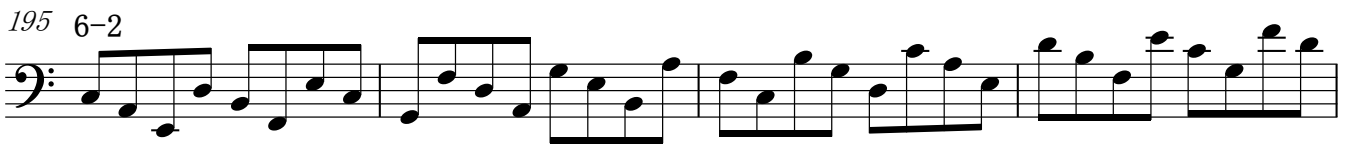


175



179





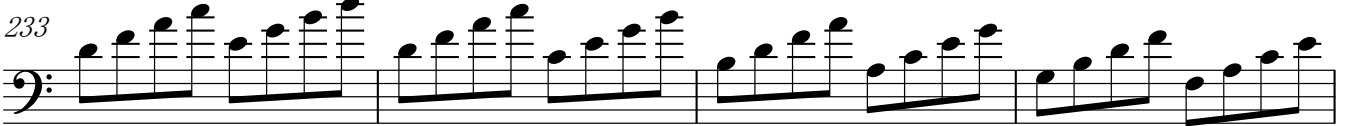
225



229 7-1



233



237



240



244 7-2



248



252



255



259 8-1



263



266



270 8-2



274



277

